



Test Report

Report No. A2180228608101R1

Page 1 of 21

Applicant NANJING WOTIAN TECHNOLOGY CO., LTD.

Address WENYING ROAD, BINJIANG DEVELOPMENT ZONE, NANJING, 211161, CHINA

The following sample(s) and sample information was/were submitted and identified by/on the behalf of the client

Final Product Name Pressure Transmitter
Part No. PCM Series
Sample Received Date Dec. 3, 2018
Testing Period Dec. 3, 2018 to Dec. 19, 2018

Test Requested As specified by client, to test Lead(Pb),Cadmium(Cd),Mercury(Hg),Hexavalent Chromium(Cr(VI)),Polybrominated Biphenyls(PBBs),Polybrominated Diphenyl Ethers (PBDEs),Phthalates (DBP,BBP,DEHP,DIBP) in the submitted sample(s).

Test Method/Test Result(s) Please refer to the following page(s).

Conclusion

Tested Sample	According to standard/directive	Result
Submitted Sample	RoHS Directive 2011/65/EU with amendment (EU) 2015/863	Pass

Pass means that the results shown on the report comply with the limits set by RoHS Directive 2011/65/EU with amendment (EU) 2015/863.

Tested by Wangdong

Reviewed by Gou Cuili

Approved by Chen kaimin

Date Jan. 7, 2019

Chen kaimin
Lab Manager

No. R295828140

Centre Testing International Pimiao(Shanghai) Co., Ltd.

No. 1996, Xinqinqiao Road, Pudong New District, Shanghai, China



Test Report

Report No. A2180228608101R1

Page 2 of 21

The following sample(s) and sample information was/were submitted and identified by/on the behalf of the client

No.	Name of the Original Accessory	Model of the Original Accessory	Component of the Original Accessory	Material		
001	Pressure sensor	PC320	Header	Metal		
025						
002					Junk ring	Metal
003					Ceramic gasket	Ceramic
004					Chip	Silicon
005					Diaphragm	Metal
006					Silicon oil	Nonmetal
007	Pressure port	WTR07-P1	—	Metal		
008	Housing	WTR07-C4	—	Metal		
009	Amplifying circuit board	050I7	PCB board $\Phi 18 \times 1$	Electronic material		
010			Resistance 150 Ω /5%			
011			Capacitance 3.3nF/1000V			
012			Magnetic bead CBW160808U102T			
013			Inductance CMI160808VR39K			
014			Diode 1N60			
015			Stabilivolt 7.5V/0.5W			
016			TVS tube SMAJ33CA			
017			Audion BCX56			
018			Grounding bracket E-320A		Metal	
019	Mini 4Pin connector	OMAL	Leather gasket	Nonmetal		
020			Plastic housing	Nonmetal		
021			Plug pin	Metal		
022			Fastening screw	Metal		
023	Welding tin wire	0.2mm	—	Metal		
024	Welding tin paste	DFA	—	Metal		

Test Report

Report No. A2180228608101R1

Page 3 of 21

Test Method

Tested Item(s)	Test Method	Measured Equipment(s)
Lead(Pb)	IEC 62321-5:2013	ICP-OES
Cadmium(Cd)	IEC 62321-5:2013	ICP-OES
Mercury(Hg)	IEC 62321-4:2013+AMD1:2017 CSV	ICP-OES
Hexavalent Chromium(Cr(VI))	IEC 62321-7-2:2017 and/or determination of Total Chromium by IEC 62321-5:2013	UV-Vis/ICP-OES
	IEC 62321-7-1:2015	UV-Vis
Polybrominated Biphenyls(PBBs)	IEC 62321-6:2015	GC-MS
Polybrominated Diphenyl Ethers (PBDEs)	IEC 62321-6:2015	GC-MS
Phthalates (DBP, BBP, DEHP, DIBP)	IEC 62321-8:2017	GC-MS

Test Result(s)

Tested Item(s)	Result			MDL	Limit
	001	002	003		
Lead (Pb)	N.D.	N.D.	N.D.	2 mg/kg	1000 mg/kg
Cadmium (Cd)	N.D.	N.D.	N.D.	2 mg/kg	100 mg/kg
Mercury (Hg)	N.D.	N.D.	N.D.	2 mg/kg	1000 mg/kg
Hexavalent Chromium (Cr(VI))	--	--	N.D.	8 mg/kg	1000 mg/kg
	N.D. ▼	N.D. ▼	--	0.10 µg/cm ² (LOQ)	

Tested Item(s)	Result			MDL	Limit
	004	005	006		
Lead (Pb)	N.D.	N.D.	N.D.	2 mg/kg	1000 mg/kg
Cadmium (Cd)	N.D.	N.D.	N.D.	2 mg/kg	100 mg/kg
Mercury (Hg)	N.D.	N.D.	N.D.	2 mg/kg	1000 mg/kg
Hexavalent Chromium (Cr(VI))	N.D.	--	N.D.	8 mg/kg	1000 mg/kg
	--	N.D. ▼	--	0.10 µg/cm ² (LOQ)	

Test Report

Report No. A2180228608101R1

Page 4 of 21

Tested Item(s)	Result			MDL	Limit
	007	008	009		
Lead (Pb)	N.D.	N.D.	N.D.	2 mg/kg	1000 mg/kg
Cadmium (Cd)	N.D.	N.D.	N.D.	2 mg/kg	100 mg/kg
Mercury (Hg)	N.D.	N.D.	N.D.	2 mg/kg	1000 mg/kg
Hexavalent Chromium (Cr(VI))	--	--	N.D.	8 mg/kg	1000 mg/kg
	N.D.▼	N.D.▼	--	0.10 µg/cm ² (LOQ)	

Tested Item(s)	Result			MDL	Limit
	010	011	012		
Lead (Pb)	80 mg/kg	N.D.	N.D.	2 mg/kg	1000 mg/kg
Cadmium (Cd)	N.D.	N.D.	N.D.	2 mg/kg	100 mg/kg
Mercury (Hg)	N.D.	N.D.	N.D.	2 mg/kg	1000 mg/kg
Hexavalent Chromium (Cr(VI))	N.D.	N.D.	N.D.	8 mg/kg	1000 mg/kg
	--	--	--	0.10 µg/cm ² (LOQ)	

Tested Item(s)	Result			MDL	Limit
	013	014	015		
Lead (Pb)	N.D.	>20%*	>20%*	2 mg/kg	1000 mg/kg
Cadmium (Cd)	N.D.	N.D.	N.D.	2 mg/kg	100 mg/kg
Mercury (Hg)	N.D.	N.D.	N.D.	2 mg/kg	1000 mg/kg
Hexavalent Chromium (Cr(VI))	N.D.	N.D.	N.D.	8 mg/kg	1000 mg/kg
	--	--	--	0.10 µg/cm ² (LOQ)	

Tested Item(s)	Result			MDL	Limit
	016	017	018		
Lead (Pb)	1050 mg/kg*	1446 mg/kg* ¹	134 mg/kg	2 mg/kg	1000 mg/kg
Cadmium (Cd)	N.D.	N.D.	N.D.	2 mg/kg	100 mg/kg
Mercury (Hg)	N.D.	N.D.	N.D.	2 mg/kg	1000 mg/kg
Hexavalent Chromium (Cr(VI))	N.D.	N.D.	--	8 mg/kg	1000 mg/kg
	--	--	N.D.▼	0.10 µg/cm ² (LOQ)	

Test Report

Report No. A2180228608101R1

Page 5 of 21

Tested Item(s)	Result			MDL	Limit
	019	020	021		
Lead (Pb)	N.D.	N.D.	226 mg/kg	2 mg/kg	1000 mg/kg
Cadmium (Cd)	N.D.	N.D.	N.D.	2 mg/kg	100 mg/kg
Mercury (Hg)	N.D.	N.D.	N.D.	2 mg/kg	1000 mg/kg
Hexavalent Chromium (Cr(VI))	N.D.	N.D.	--	8 mg/kg	1000 mg/kg
	--	--	N.D.▼	0.10 µg/cm ² (LOQ)	

Tested Item(s)	Result			MDL	Limit
	022	023	024		
Lead (Pb)	N.D.	67 mg/kg	17 mg/kg	2 mg/kg	1000 mg/kg
Cadmium (Cd)	N.D.	N.D.	N.D.	2 mg/kg	100 mg/kg
Mercury (Hg)	N.D.	N.D.	N.D.	2 mg/kg	1000 mg/kg
Hexavalent Chromium (Cr(VI))	--	--	N.D.	8 mg/kg	1000 mg/kg
	N.D.▼	N.D.▼	--	0.10 µg/cm ² (LOQ)	

Tested Item(s)	Result	MDL	Limit
	025		
Lead (Pb)	N.D.	2 mg/kg	1000 mg/kg
Cadmium (Cd)	N.D.	2 mg/kg	100 mg/kg
Mercury (Hg)	N.D.	2 mg/kg	1000 mg/kg
Hexavalent Chromium (Cr(VI))	--	8 mg/kg	1000 mg/kg
	N.D.▼	0.10 µg/cm ² (LOQ)	

Test Report

Report No. A2180228608101R1

Page 6 of 21

Tested Item(s)	Result			MDL	Limit
	003	004	006		
Polybrominated Biphenyls(PBBs)					
Monobromobiphenyl	N.D.	N.D.	N.D.	5 mg/kg	1000 mg/kg
Dibromobiphenyl	N.D.	N.D.	N.D.	5 mg/kg	
Tribromobiphenyl	N.D.	N.D.	N.D.	5 mg/kg	
Tetrabromobiphenyl	N.D.	N.D.	N.D.	5 mg/kg	
Pentabromobiphenyl	N.D.	N.D.	N.D.	5 mg/kg	
Hexabromobiphenyl	N.D.	N.D.	N.D.	5 mg/kg	
Heptabromobiphenyl	N.D.	N.D.	N.D.	5 mg/kg	
Octabromobiphenyl	N.D.	N.D.	N.D.	5 mg/kg	
Nonabromobiphenyl	N.D.	N.D.	N.D.	5 mg/kg	
Decabromobiphenyl	N.D.	N.D.	N.D.	5 mg/kg	

Tested Item(s)	Result			MDL	Limit
	009	010	011		
Polybrominated Biphenyls(PBBs)					
Monobromobiphenyl	N.D.	N.D.	N.D.	5 mg/kg	1000 mg/kg
Dibromobiphenyl	N.D.	N.D.	N.D.	5 mg/kg	
Tribromobiphenyl	N.D.	N.D.	N.D.	5 mg/kg	
Tetrabromobiphenyl	N.D.	N.D.	N.D.	5 mg/kg	
Pentabromobiphenyl	N.D.	N.D.	N.D.	5 mg/kg	
Hexabromobiphenyl	N.D.	N.D.	N.D.	5 mg/kg	
Heptabromobiphenyl	N.D.	N.D.	N.D.	5 mg/kg	
Octabromobiphenyl	N.D.	N.D.	N.D.	5 mg/kg	
Nonabromobiphenyl	N.D.	N.D.	N.D.	5 mg/kg	
Decabromobiphenyl	N.D.	N.D.	N.D.	5 mg/kg	

Test Report

Report No. A2180228608101R1

Page 7 of 21

Tested Item(s)	Result			MDL	Limit
	012	013	014		
Polybrominated Biphenyls(PBBs)					
Monobromobiphenyl	N.D.	N.D.	N.D.	5 mg/kg	1000 mg/kg
Dibromobiphenyl	N.D.	N.D.	N.D.	5 mg/kg	
Tribromobiphenyl	N.D.	N.D.	N.D.	5 mg/kg	
Tetrabromobiphenyl	N.D.	N.D.	N.D.	5 mg/kg	
Pentabromobiphenyl	N.D.	N.D.	N.D.	5 mg/kg	
Hexabromobiphenyl	N.D.	N.D.	N.D.	5 mg/kg	
Heptabromobiphenyl	N.D.	N.D.	N.D.	5 mg/kg	
Octabromobiphenyl	N.D.	N.D.	N.D.	5 mg/kg	
Nonabromobiphenyl	N.D.	N.D.	N.D.	5 mg/kg	
Decabromobiphenyl	N.D.	N.D.	N.D.	5 mg/kg	

Tested Item(s)	Result			MDL	Limit
	015	016	017		
Polybrominated Biphenyls(PBBs)					
Monobromobiphenyl	N.D.	N.D.	N.D.	5 mg/kg	1000 mg/kg
Dibromobiphenyl	N.D.	N.D.	N.D.	5 mg/kg	
Tribromobiphenyl	N.D.	N.D.	N.D.	5 mg/kg	
Tetrabromobiphenyl	N.D.	N.D.	N.D.	5 mg/kg	
Pentabromobiphenyl	N.D.	N.D.	N.D.	5 mg/kg	
Hexabromobiphenyl	N.D.	N.D.	N.D.	5 mg/kg	
Heptabromobiphenyl	N.D.	N.D.	N.D.	5 mg/kg	
Octabromobiphenyl	N.D.	N.D.	N.D.	5 mg/kg	
Nonabromobiphenyl	N.D.	N.D.	N.D.	5 mg/kg	
Decabromobiphenyl	N.D.	N.D.	N.D.	5 mg/kg	

Test Report

Report No. A2180228608101R1

Page 8 of 21

Tested Item(s)	Result		MDL	Limit
	019	020		
Polybrominated Biphenyls(PBBs)				
Monobromobiphenyl	N.D.	N.D.	5 mg/kg	1000 mg/kg
Dibromobiphenyl	N.D.	N.D.	5 mg/kg	
Tribromobiphenyl	N.D.	N.D.	5 mg/kg	
Tetrabromobiphenyl	N.D.	N.D.	5 mg/kg	
Pentabromobiphenyl	N.D.	N.D.	5 mg/kg	
Hexabromobiphenyl	N.D.	N.D.	5 mg/kg	
Heptabromobiphenyl	N.D.	N.D.	5 mg/kg	
Octabromobiphenyl	N.D.	N.D.	5 mg/kg	
Nonabromobiphenyl	N.D.	N.D.	5 mg/kg	
Decabromobiphenyl	N.D.	N.D.	5 mg/kg	

Tested Item(s)	Result			MDL	Limit
	003	004	006		
Polybrominated Diphenyl Ethers (PBDEs)					
Monobromodiphenyl ether	N.D.	N.D.	N.D.	5 mg/kg	1000 mg/kg
Dibromodiphenyl ether	N.D.	N.D.	N.D.	5 mg/kg	
Tribromodiphenyl ether	N.D.	N.D.	N.D.	5 mg/kg	
Tetrabromodiphenyl ether	N.D.	N.D.	N.D.	5 mg/kg	
Pentabromodiphenyl ether	N.D.	N.D.	N.D.	5 mg/kg	
Hexabromodiphenyl ether	N.D.	N.D.	N.D.	5 mg/kg	
Heptabromodiphenyl ether	N.D.	N.D.	N.D.	5 mg/kg	
Octabromodiphenyl ether	N.D.	N.D.	N.D.	5 mg/kg	
Nonabromodiphenyl ether	N.D.	N.D.	N.D.	5 mg/kg	
Decabromodiphenyl ether	N.D.	N.D.	N.D.	5 mg/kg	

Test Report

Report No. A2180228608101R1

Page 9 of 21

Tested Item(s)	Result			MDL	Limit
	009	010	011		
Polybrominated Diphenyl Ethers (PBDEs)					
Monobromodiphenyl ether	N.D.	N.D.	N.D.	5 mg/kg	1000 mg/kg
Dibromodiphenyl ether	N.D.	N.D.	N.D.	5 mg/kg	
Tribromodiphenyl ether	N.D.	N.D.	N.D.	5 mg/kg	
Tetrabromodiphenyl ether	N.D.	N.D.	N.D.	5 mg/kg	
Pentabromodiphenyl ether	N.D.	N.D.	N.D.	5 mg/kg	
Hexabromodiphenyl ether	N.D.	N.D.	N.D.	5 mg/kg	
Heptabromodiphenyl ether	N.D.	N.D.	N.D.	5 mg/kg	
Octabromodiphenyl ether	N.D.	N.D.	N.D.	5 mg/kg	
Nonabromodiphenyl ether	N.D.	N.D.	N.D.	5 mg/kg	
Decabromodiphenyl ether	N.D.	N.D.	N.D.	5 mg/kg	

Tested Item(s)	Result			MDL	Limit
	012	013	014		
Polybrominated Diphenyl Ethers (PBDEs)					
Monobromodiphenyl ether	N.D.	N.D.	N.D.	5 mg/kg	1000 mg/kg
Dibromodiphenyl ether	N.D.	N.D.	N.D.	5 mg/kg	
Tribromodiphenyl ether	N.D.	N.D.	N.D.	5 mg/kg	
Tetrabromodiphenyl ether	N.D.	N.D.	N.D.	5 mg/kg	
Pentabromodiphenyl ether	N.D.	N.D.	N.D.	5 mg/kg	
Hexabromodiphenyl ether	N.D.	N.D.	N.D.	5 mg/kg	
Heptabromodiphenyl ether	N.D.	N.D.	N.D.	5 mg/kg	
Octabromodiphenyl ether	N.D.	N.D.	N.D.	5 mg/kg	
Nonabromodiphenyl ether	N.D.	N.D.	N.D.	5 mg/kg	
Decabromodiphenyl ether	N.D.	N.D.	N.D.	5 mg/kg	

Test Report

Report No. A2180228608101R1

Page 10 of 21

Tested Item(s)	Result			MDL	Limit
	015	016	017		
Polybrominated Diphenyl Ethers (PBDEs)					
Monobromodiphenyl ether	N.D.	N.D.	N.D.	5 mg/kg	1000 mg/kg
Dibromodiphenyl ether	N.D.	N.D.	N.D.	5 mg/kg	
Tribromodiphenyl ether	N.D.	N.D.	N.D.	5 mg/kg	
Tetrabromodiphenyl ether	N.D.	N.D.	N.D.	5 mg/kg	
Pentabromodiphenyl ether	N.D.	N.D.	N.D.	5 mg/kg	
Hexabromodiphenyl ether	N.D.	N.D.	N.D.	5 mg/kg	
Heptabromodiphenyl ether	N.D.	N.D.	N.D.	5 mg/kg	
Octabromodiphenyl ether	N.D.	N.D.	N.D.	5 mg/kg	
Nonabromodiphenyl ether	N.D.	N.D.	N.D.	5 mg/kg	
Decabromodiphenyl ether	N.D.	N.D.	N.D.	5 mg/kg	

Tested Item(s)	Result		MDL	Limit
	019	020		
Polybrominated Diphenyl Ethers (PBDEs)				
Monobromodiphenyl ether	N.D.	N.D.	5 mg/kg	1000 mg/kg
Dibromodiphenyl ether	N.D.	N.D.	5 mg/kg	
Tribromodiphenyl ether	N.D.	N.D.	5 mg/kg	
Tetrabromodiphenyl ether	N.D.	N.D.	5 mg/kg	
Pentabromodiphenyl ether	N.D.	N.D.	5 mg/kg	
Hexabromodiphenyl ether	N.D.	N.D.	5 mg/kg	
Heptabromodiphenyl ether	N.D.	N.D.	5 mg/kg	
Octabromodiphenyl ether	N.D.	N.D.	5 mg/kg	
Nonabromodiphenyl ether	N.D.	N.D.	5 mg/kg	
Decabromodiphenyl ether	N.D.	N.D.	5 mg/kg	

Test Report

Report No. A2180228608101R1

Page 11 of 21

Tested Item(s)	Result			MDL	Limit
	003	004	006		
Phthalates (DBP, BBP, DEHP, DIBP)					
Dibutyl phthalate (DBP) CAS#:84-74-2	N.D.	N.D.	N.D.	50 mg/kg	1000 mg/kg
Butyl benzyl phthalate (BBP) CAS#:85-68-7	N.D.	N.D.	N.D.	50 mg/kg	1000 mg/kg
Di-(2-ethylhexyl) phthalate (DEHP) CAS#:117-81-7	N.D.	N.D.	145 mg/kg	50 mg/kg	1000 mg/kg
Diisobutyl phthalate (DIBP) CAS#:84-69-5	N.D.	N.D.	N.D.	50 mg/kg	1000 mg/kg

Tested Item(s)	Result			MDL	Limit
	009	010	011		
Phthalates (DBP, BBP, DEHP, DIBP)					
Dibutyl phthalate (DBP) CAS#:84-74-2	N.D.	N.D.	N.D.	50 mg/kg	1000 mg/kg
Butyl benzyl phthalate (BBP) CAS#:85-68-7	N.D.	N.D.	N.D.	50 mg/kg	1000 mg/kg
Di-(2-ethylhexyl) phthalate (DEHP) CAS#:117-81-7	N.D.	N.D.	N.D.	50 mg/kg	1000 mg/kg
Diisobutyl phthalate (DIBP) CAS#:84-69-5	N.D.	N.D.	N.D.	50 mg/kg	1000 mg/kg

Tested Item(s)	Result			MDL	Limit
	012	013	014		
Phthalates (DBP, BBP, DEHP, DIBP)					
Dibutyl phthalate (DBP) CAS#:84-74-2	N.D.	N.D.	N.D.	50 mg/kg	1000 mg/kg
Butyl benzyl phthalate (BBP) CAS#:85-68-7	N.D.	N.D.	N.D.	50 mg/kg	1000 mg/kg
Di-(2-ethylhexyl) phthalate (DEHP) CAS#:117-81-7	N.D.	N.D.	N.D.	50 mg/kg	1000 mg/kg
Diisobutyl phthalate (DIBP) CAS#:84-69-5	N.D.	N.D.	N.D.	50 mg/kg	1000 mg/kg

Test Report

Report No. A2180228608101R1

Page 12 of 21

Tested Item(s)	Result			MDL	Limit
	015	016	017		
Phthalates (DBP, BBP, DEHP, DIBP)					
Dibutyl phthalate (DBP) CAS#:84-74-2	N.D.	N.D.	N.D.	50 mg/kg	1000 mg/kg
Butyl benzyl phthalate (BBP) CAS#:85-68-7	N.D.	N.D.	N.D.	50 mg/kg	1000 mg/kg
Di-(2-ethylhexyl) phthalate (DEHP) CAS#:117-81-7	N.D.	N.D.	N.D.	50 mg/kg	1000 mg/kg
Diisobutyl phthalate (DIBP) CAS#:84-69-5	N.D.	N.D.	N.D.	50 mg/kg	1000 mg/kg

Tested Item(s)	Result		MDL	Limit
	019	020		
Phthalates (DBP, BBP, DEHP, DIBP)				
Dibutyl phthalate (DBP) CAS#:84-74-2	N.D.	N.D.	50 mg/kg	1000 mg/kg
Butyl benzyl phthalate (BBP) CAS#:85-68-7	N.D.	N.D.	50 mg/kg	1000 mg/kg
Di-(2-ethylhexyl) phthalate (DEHP) CAS#:117-81-7	N.D.	N.D.	50 mg/kg	1000 mg/kg
Diisobutyl phthalate (DIBP) CAS#:84-69-5	N.D.	N.D.	50 mg/kg	1000 mg/kg

Test Report

Report No. A2180228608101R1

Page 13 of 21

Tested Sample/Part Description

- 001 Silvery metal
- 002 Silvery metal
- 003 White ceramic
- 004 Chip
- 005 Silvery metal
- 006 Colorless transparent liquid
- 007 Silvery metal
- 008 Silvery metal
- 009 PCB(Tested as a whole)
- 010 Electronic components (Tested as a whole)
- 011 Electronic components (Tested as a whole)
- 012 Electronic components (Tested as a whole)
- 013 Electronic components (Tested as a whole)
- 014 Electronic components (Tested as a whole)
- 015 Electronic components (Tested as a whole)
- 016 Electronic components (Tested as a whole)
- 017 Electronic components (Tested as a whole)
- 018 Silvery metal
- 019 Black plastic
- 020 Black plastic
- 021 Silvery metal
- 022 Silvery metal
- 023 Silvery metal wire
- 024 Grey paste
- 025 Metal with golden plating

Test Report

Report No. A2180228608101R1

Page 14 of 21

Remark: The sample(s) had been dissolved totally tested for Lead, Cadmium, Mercury.

-The sample(s) was tested as a whole, because it's impossible to disassemble or separate it by current equipment and technology. The result(s) shown on this report may be different from the content of any homogeneous material.

-MDL = Method Detection Limit

-N.D. = Not Detected (<MDL or LOQ)

-mg/kg = ppm = parts per million

-LOQ = Limit of Quantification, The LOQ of Hexavalent chromium is 0.10 $\mu\text{g}/\text{cm}^2$

-▼ The sample is negative for Cr(VI) – The Cr(VI) concentration is below 0.10 $\mu\text{g}/\text{cm}^2$. The coating is considered a non-Cr(VI) based coating.

-*= According to the client's statement, the material of the sample(s) fall into exemption items 7(c)-I according to EU Directive 2011/65/EU: Electrical and electronic components containing lead in a glass or ceramic other than dielectric ceramic in capacitors, e.g. piezoelectronic devices, or in a glass or ceramic matrix compound.

-*¹= According to the client's statement, lead mainly comes from the high melting temperature type solders. Lead in high melting temperature type solders (i.e. lead- based alloys containing 85 % by weight or more lead) is exempted from the restriction, with reference to EU Directive 2011/65/EU annex III Exemption Applications 7(a).

Note: This testing report added "Conclusion" based on the original report of No. A2180228608101. This testing report displaces the original one which was invalid since the date of this testing report released.

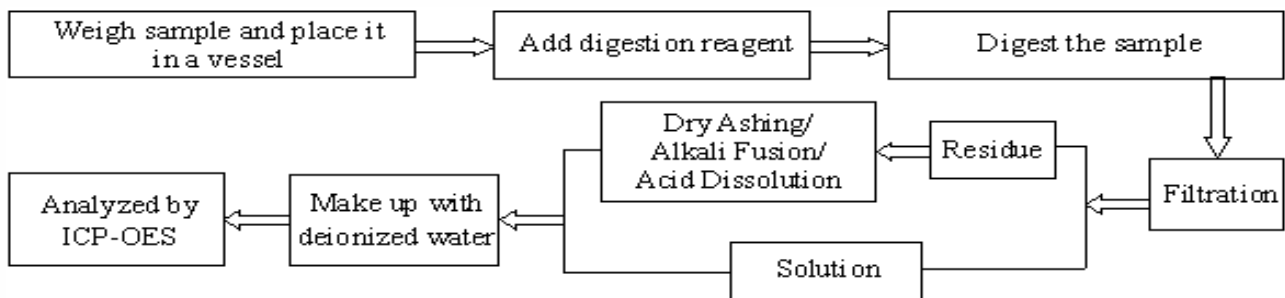
Test Report

Report No. A2180228608101R1

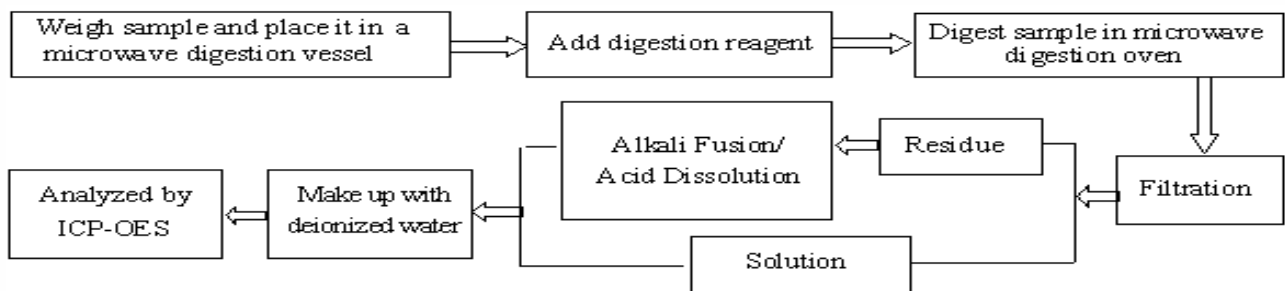
Page 15 of 21

Test Process

1. Lead(Pb), Cadmium(Cd), Chromium(Cr)

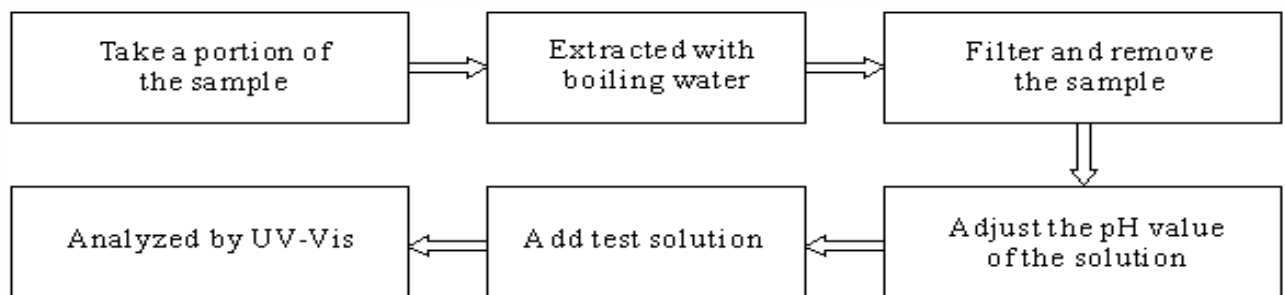


2. Mercury(Hg)

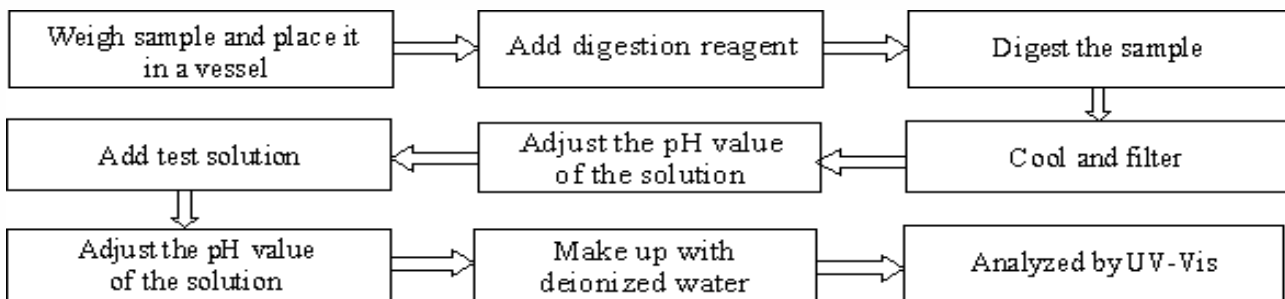


3. Hexavalent Chromium(Cr(VI))

(1) IEC 62321-7-1:2015



(2) IEC 62321-7-2:2017

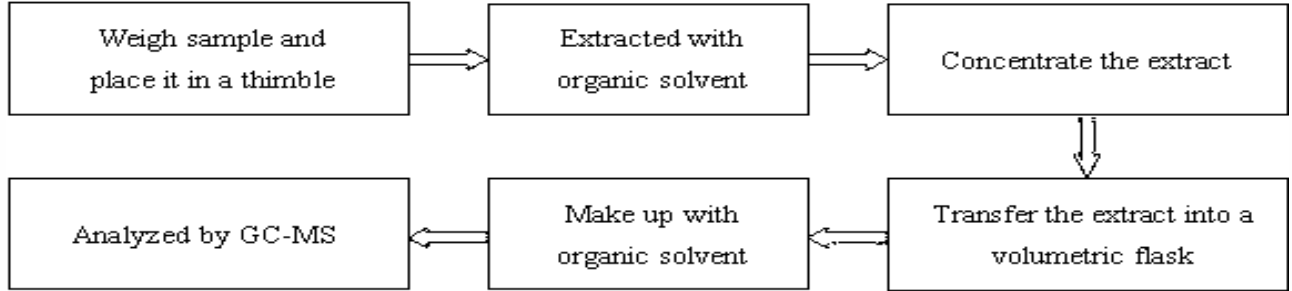


Test Report

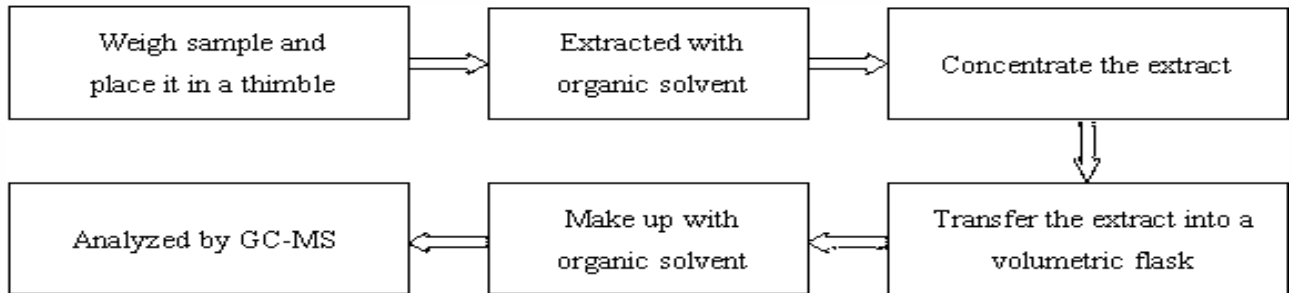
Report No. A2180228608101R1

Page 16 of 21

4. Polybrominated Biphenyls(PBBs), Polybrominated Diphenyl Ethers (PBDEs)



5. Phthalates (DBP, BBP, DEHP, DIBP)



Test Report

Report No. A2180228608101R1

Page 17 of 21

Photo(s) of the sample(s)

Final Product



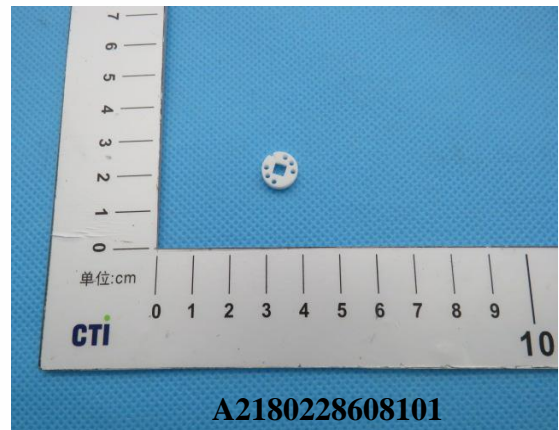
001,025



002



003



Test Report

Report No. A2180228608101R1

Page 18 of 21

004



A2180228608101

005



A2180228608101

006



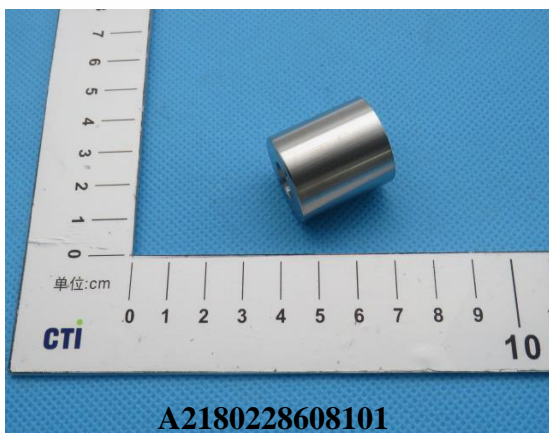
A2180228608101

007



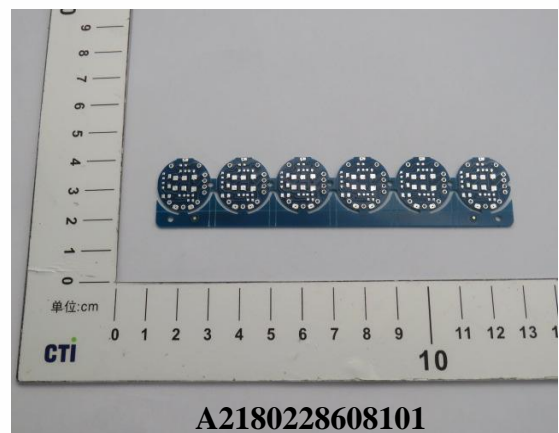
A2180228608101

008



A2180228608101

009



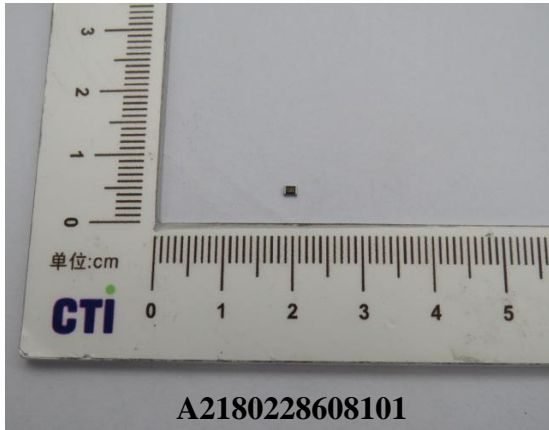
A2180228608101

Test Report

Report No. A2180228608101R1

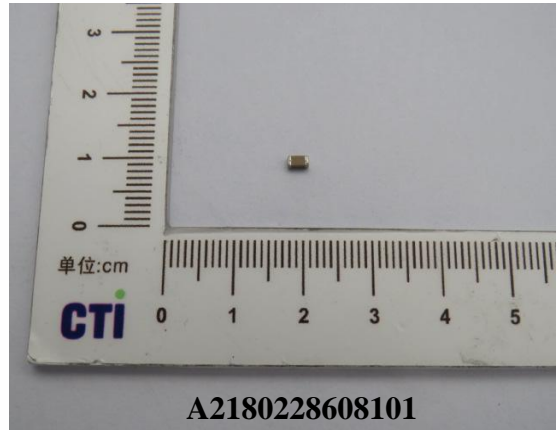
Page 19 of 21

010



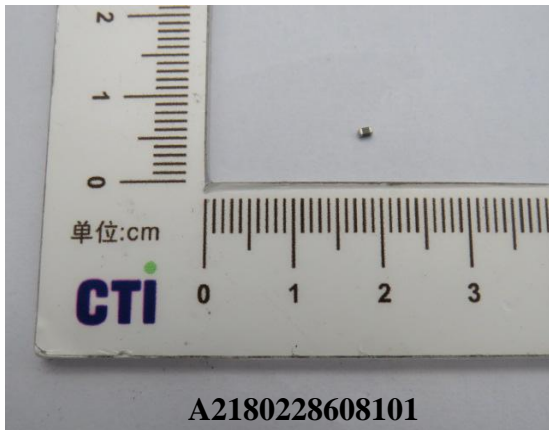
A2180228608101

011



A2180228608101

012



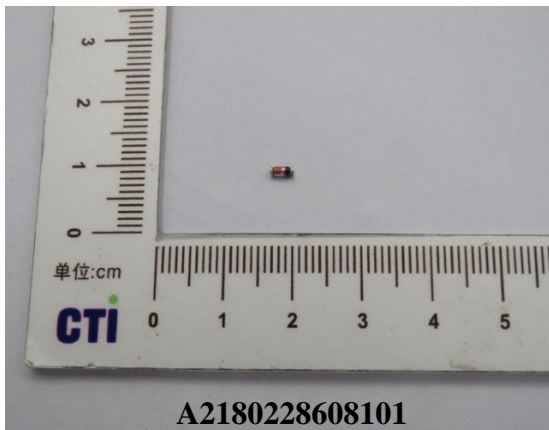
A2180228608101

013



A2180228608101

014



A2180228608101

015



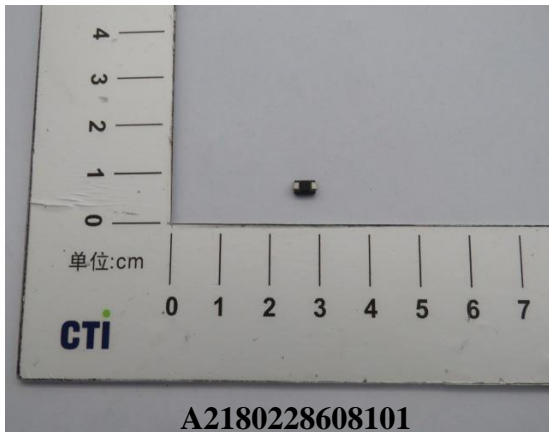
A2180228608101

Test Report

Report No. A2180228608101R1

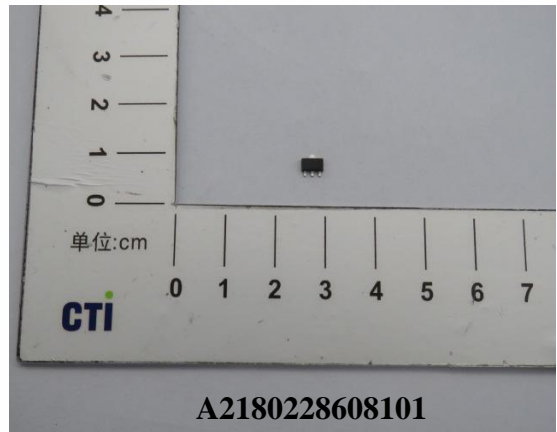
Page 20 of 21

016



A2180228608101

017



A2180228608101

018



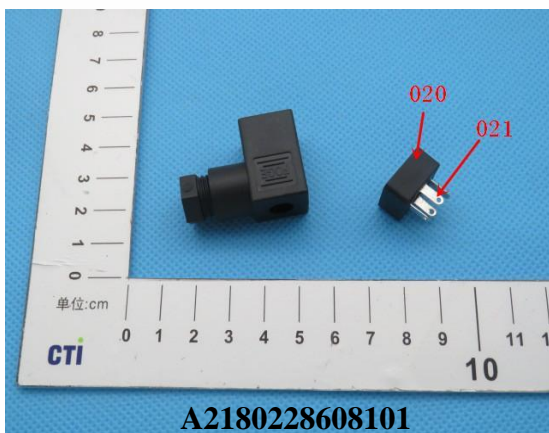
A2180228608101

019



A2180228608101

020,021



A2180228608101

022



A2180228608101

Test Report

Report No. A2180228608101R1

Page 21 of 21

023



024



*** End of Report ***

Statement:

1. This report is considered invalidated without approval signature, special seal and the seal on the perforation;
2. The sample(s) and sample information was/were provided by the client who should be responsible for the authenticity which CTI hasn't verified;
3. The result(s) shown in this report refer(s) only to the sample(s) tested;
4. Without written approval of CTI, this report can't be reproduced except in full;
5. In case of any discrepancy between the English version and Chinese version of the testing reports (if generated), the Chinese version shall prevail.